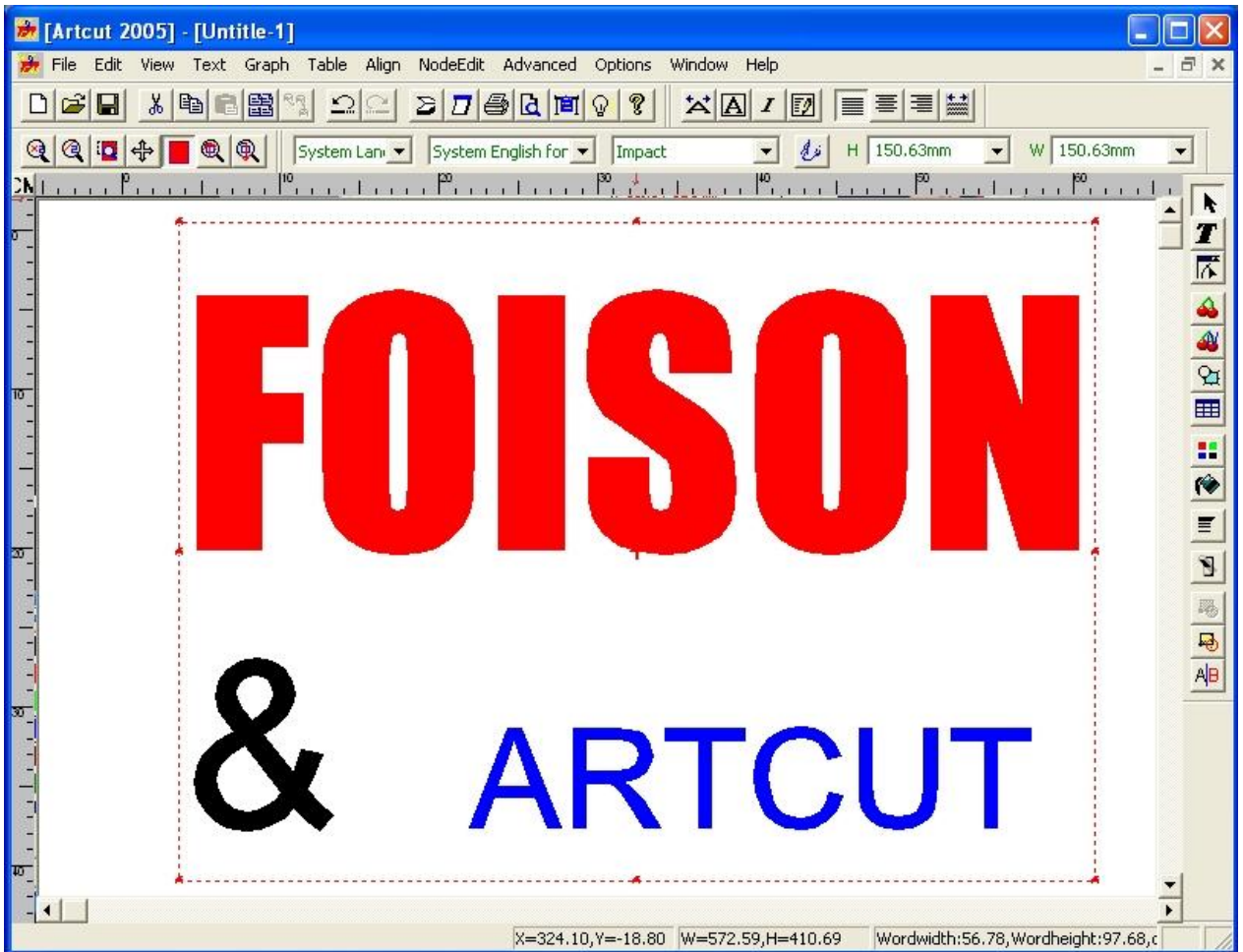
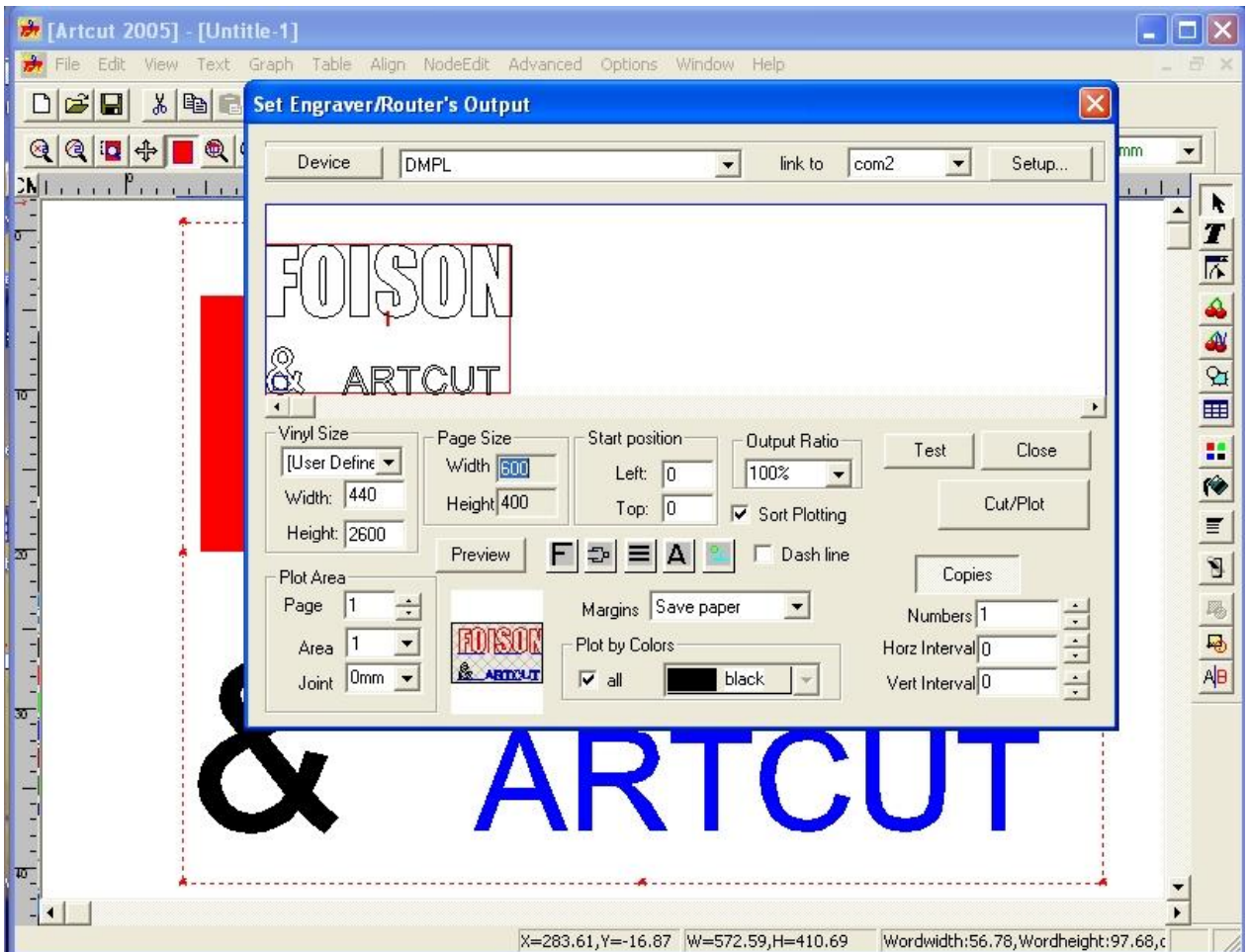


ArtCut 2005 & Foison machines.

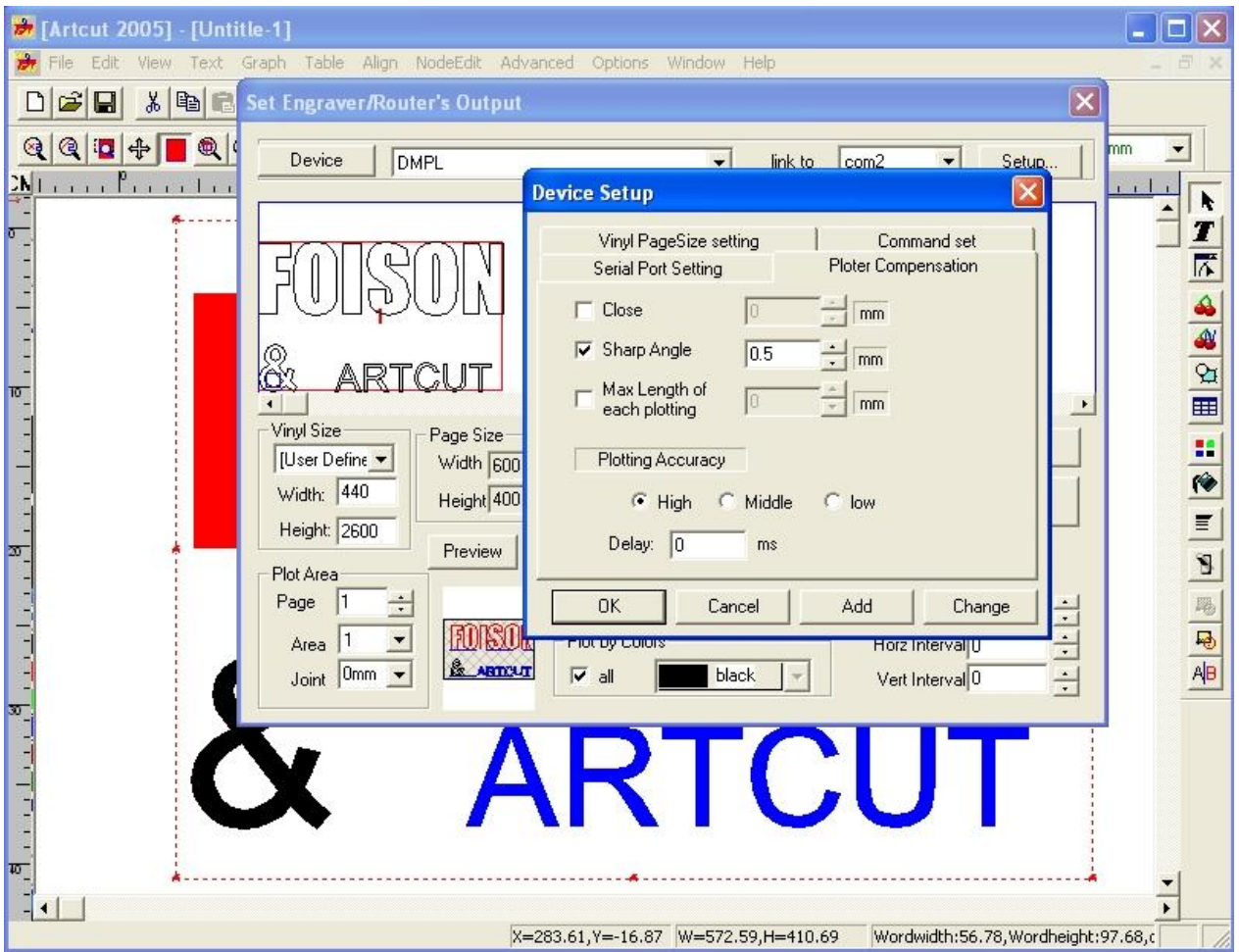
NB: We do not offer support for Artcut and this information is supplied 'as is'.
Port settings will require an available port for **com1** or **com2** only these options are accepted.



Select the generic HPGL or DMPL driver



Blade Offset should be 0.5 approx, fine tuning may be needed.



Flow control should be set to **XON XOFF** or **RTS CTS** only

